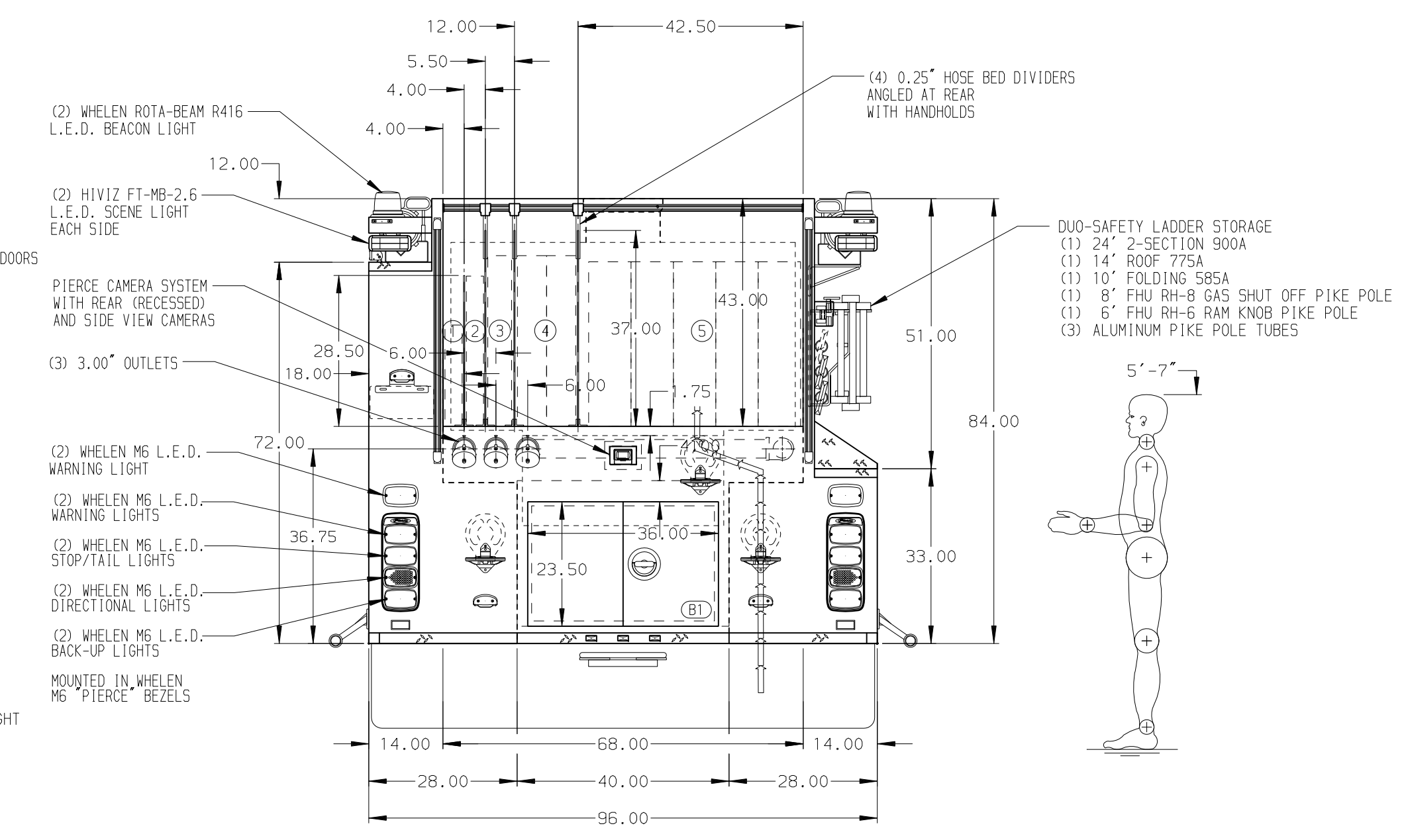
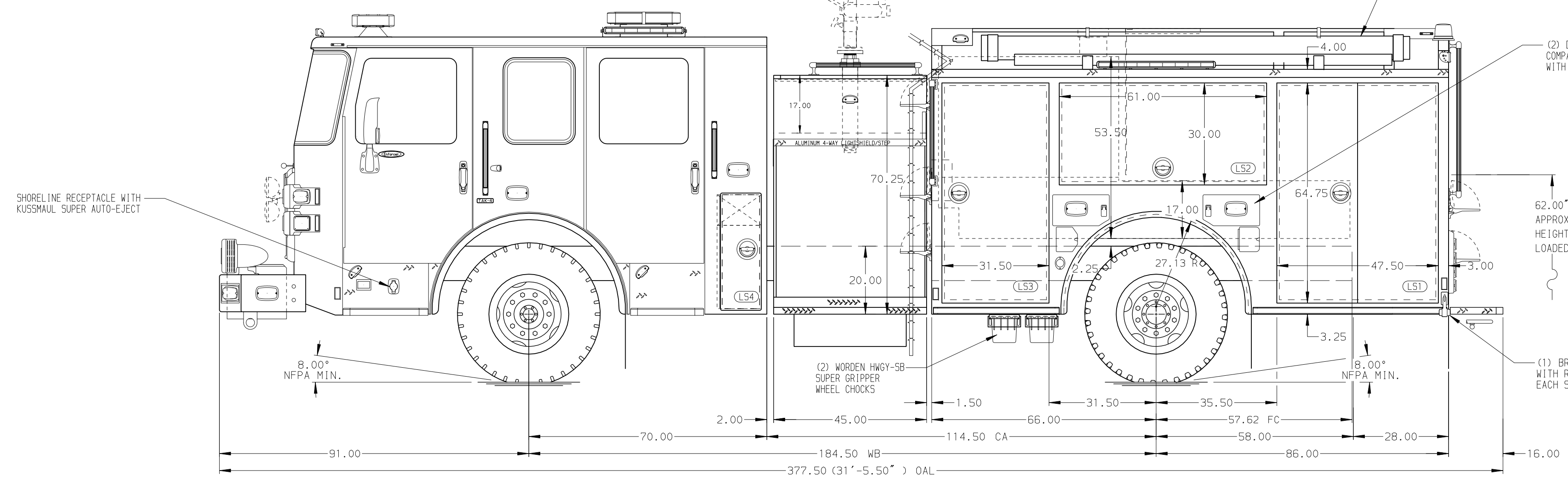


- HOSEBED CAPACITIES**
- ① 200' OF 1.75" D.J. POLY HOSE
  - ② 300' OF 1.75" D.J. POLY HOSE
  - ③ 300' OF 2.50" D.J. POLY HOSE
  - ④ 600' OF 3.00" D.J. POLY HOSE
  - ⑤ 1500' OF 5.00" D.J. POLY HOSE



**ALUMINUM BODY**

**SIDE ROLL AND FRONTAL IMPACT PROTECTION**

**NOTE**  
DIMENSIONS SHOWN ARE APPROXIMATE AND ARE SUBJECT TO MINOR DEVIATIONS AS MAY OCCUR OR BE NECESSARY IN CONSTRUCTION. MINOR DETAILS NOT SHOWN.

1. BATTERY CHARGER LOCATED BEHIND DRIVER'S SEAT
2. BATTERY CHARGER INDICATOR LOCATED AT DRIVER'S SIDE STEP AREA
3. DUAL L.E.D. LIGHT STRIPS LOCATED IN HOSE BED
4. BRUSHED STAINLESS STEEL SCUFFPLATE INSIDE EACH BODY COMPARTMENT DOORS
5. DRIP PAN GUARD FOR ROLL-UP DOOR LOCATED IN LS1, LS2, LS3, RS1, AND RS2
6. CIRCUIT BREAKER PANEL IN COMPARTMENT LS3
7. 120V DUPLEX RECEPTACLE LOCATED TBD

REV	DATE	BY	CH	ENFORCER
03DEC20		SAM	DTS	PIERCE
08OCT20		CDU	KOU	MODEL

		JOB NO.	35476
		SCALE	DATE
TITLE	1500-D-750 GAL POLY, 152" FH FDLR LS, LOW FDLR RS LADDER BRACKETS, GENERATOR, DELUGE, BOOSTER REEL	DRAWN BY	020CT20
FOR	UPPER DUBLIN TOWNSHIP FORT WASHINGTON, PENNSYLVANIA	CHECKED BY	50CT20
DWG NO.	35476AD	SHEET SIZE	SHEET NO.
		D	1 OF 1